

Invandring och arbetsmarknaden för infödda – erfarenheter från Danmark

Pieter Bevelander

Malmö Institute for Studies of Migration,
Diversity and Welfare (MIM), Malmö
University



MALMÖ UNIVERSITY
MALMÖ INSTITUTE FOR STUDIES
OF MIGRATION, DIVERSITY AND
WELFARE (MIM)

Immigrants' effect on native workers, What is new!

- Longitudinal study of refugee country immigrants and natives to Denmark (causality)
- Refugees entrance in the Danish labour market to certain sectors (low complexity index)
- Effect on low skilled native workers
 - Positive effect on native wages (especially low skilled)
 - No effect on unemployment (natives)
 - Flexible labour market

Well performed study – but narrow!

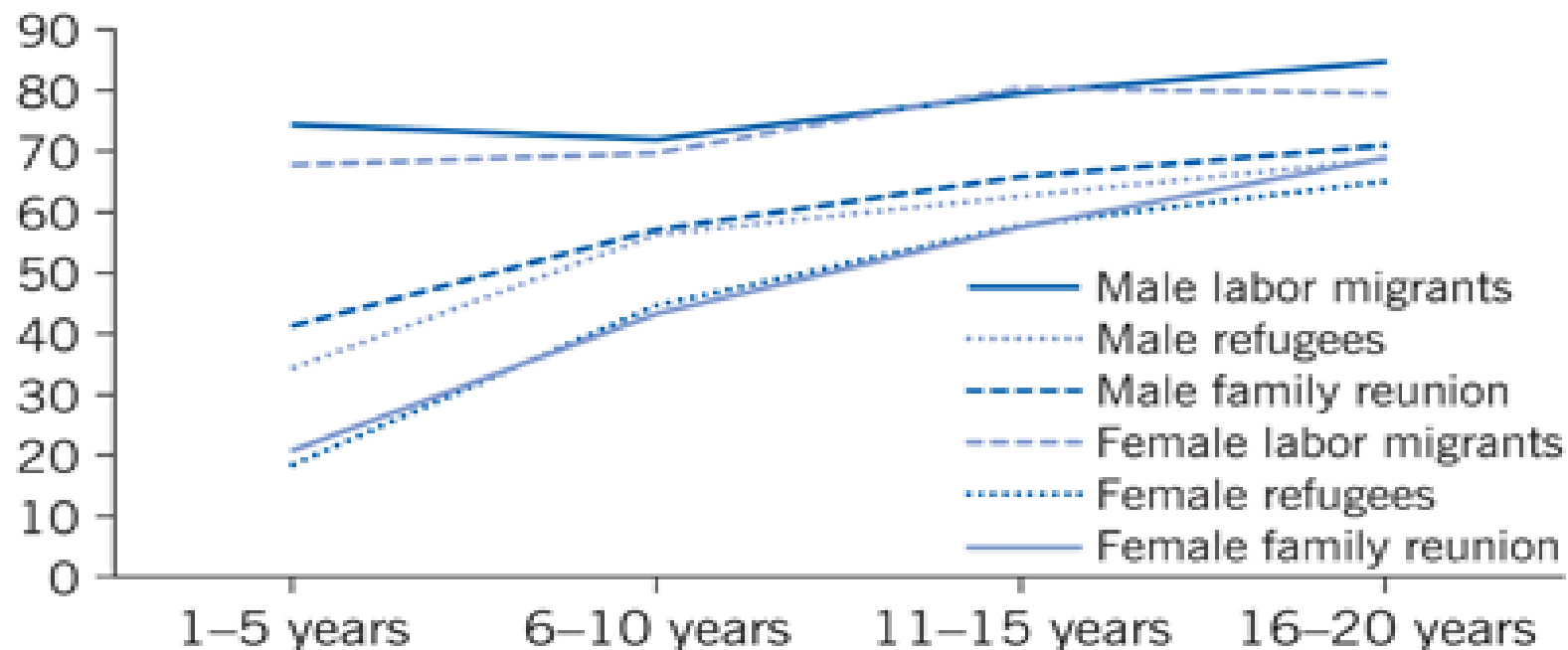
The study! What more can be said?

- Refugees and their family members treated as *low skilled* in the labour market (irrespective of their educational level or arrival reason)
- What other demand side factors than “skill complexity” could have been at play? Institutions?
- Are there differences in results by “ethnic” group! Are they treated differently - types of discrimination?

Beyond the study! What does it mean?

- Long term effects of segmentation based on ethnicity?
- Segregation in housing (ghetto debate)?
- Immigrants competing with immigrants!
- *Elephant in the room?* General lower non-OECD immigrant employment levels!
- Increased employment levels and speed up the entrance into the labour market!

Employment integration of migrants and refugees in Sweden



Note: The employment rate for each group is shown over increasing time frames. The data depicted are from 2011.

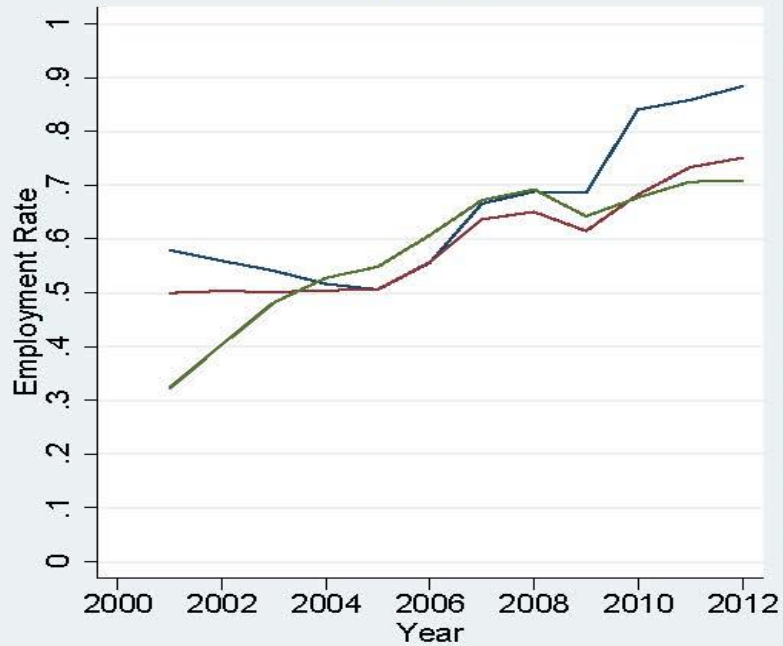
Source: Author's own calculations based Statistics Sweden's STATIV Database.



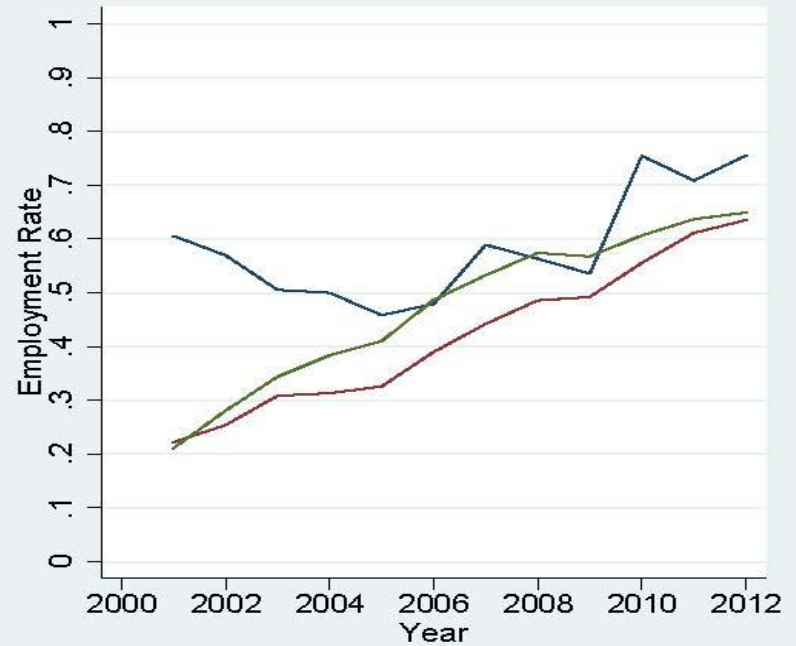
Average Employment Rate: Age 25-64

Arrival Cohort 1998/1999: Age 17-34

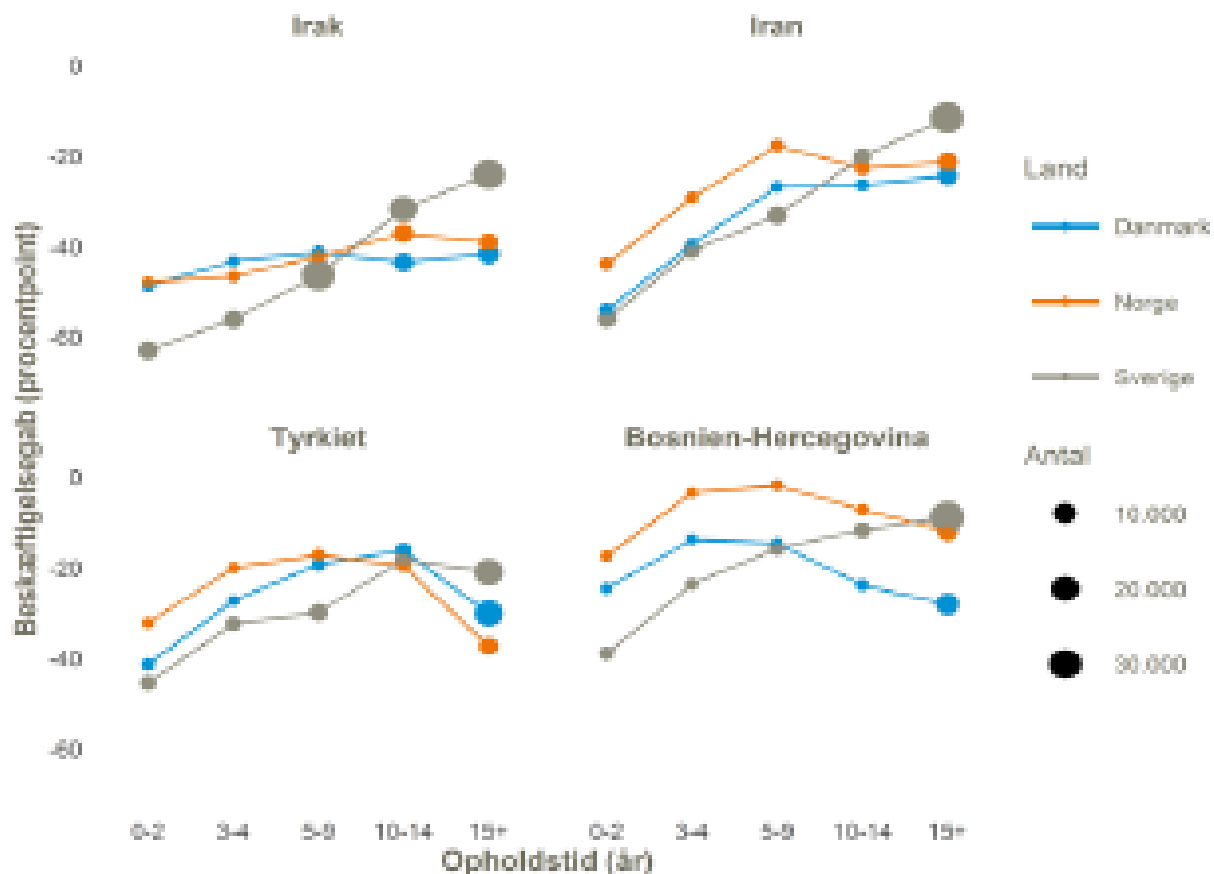
Men



Women



Figur 3 Bestæftelsesgab mellem indlandsfødte og udlandsfødte mellem 20 og 64 år fordelt på opholdstid, 2014



Ans: Kategorien "Antal" angiver udvalgte af personer fra de betragtede lande. Talene er standardiseret for køn og alder med den indlandsfødte befolkning som reference

